

ACCESSORIES

Car Adapter

Enables you to re-charge your battery with your vehicle's electrical system.



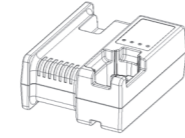
Part No. 900507

Battery Cell



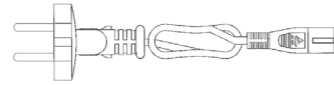
Part No. 018880

Battery Charger



Part No. 018882 (UK)

Cable



Part No. 018886 (UK)

Hex Key



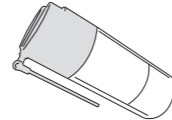
Part No. 401331

Safety Glasses



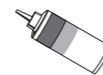
Part No. 014121

Paslode Intensive Tool Cleaner 300 ml



Part No. 115251

Paslode Impulse Lubricating Oil



Part No. 013075

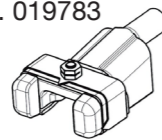
Carrying Case Standard



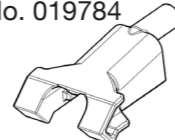
Part No. 014977

Specific Probes

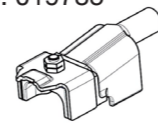
Part No. 019783



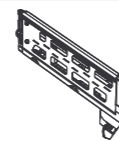
Part No. 019784



Part No. 019785



Standard magazine



Part No. 019766

Cleaning Kit (Blister)

Contains all the necessary to clean any Impulse tool



Part No. 013690

Maintenance Kit

(Filter + o'ring)



Part No. 013231



An Illinois Tool Works Company
150, Route de Lyon
F - 26500 Bourg-lès-Valence - France

019698-02 10/21

Paslode®

Impulse®

Part No. 019700 (UK)

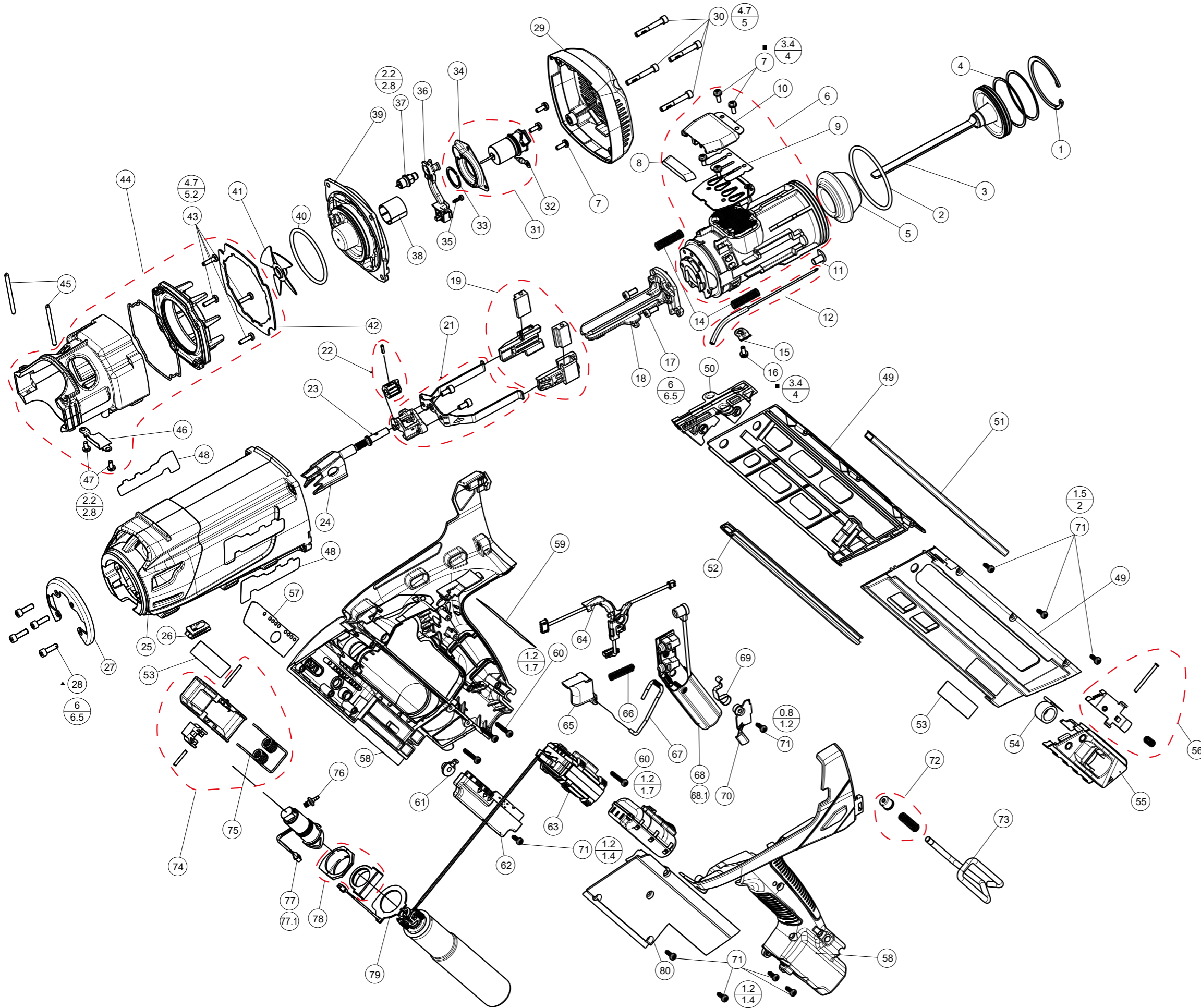


360Xi

IMPORTANT! DO NOT DESTROY

Always refer to operating and safety instructions (019693&019803UKCA) for detailed information on this tool. It is the customer's responsibility to have all operators and service personnel read and understand this information.

TOOL SCHEMATIC AND PARTS



| REP | CODE | QUANTITY | DESCRIPTION |
|------|--------|----------|-----------------------------------|
| 1 | 336680 | 1 | RETAINER RING |
| 2 | 013743 | 1 | CYLINDER O'RING |
| 3 | 019296 | 1 | PISTON ASSEMBLY |
| 4 | 336670 | 2 | PISTON RING |
| 5 | 013778 | 1 | BUMPER |
| 6 | 019292 | 1 | CYLINDER ASSEMBLY |
| 7 | 900596 | 5 | SCREW SWAGE FORM 4-11 |
| 8 | 336570 | 1 | MUFFLER |
| 9 | 336560 | 1 | REED VALVE |
| 10 | 336580 | 1 | MUFFLER COVER |
| 11 | 019283 | 1 | COMBUSTION CHAMBER SPRING GUIDE |
| 12 | 013737 | 1 | INJECTION PIPE ASSEMBLY |
| 14 | 019276 | 2 | COMBUSTION CHAMBER SPRING GUIDE |
| 15 | 013738 | 1 | BRACKET FUEL LINE |
| 16 | 900595 | 1 | SCREW SWAGE FORM 4-9 |
| 17 | 019819 | 2 | SCREW TORX 25 M5-12 |
| 18 | 019277 | 1 | NOSE |
| 19 | 019289 | 1 | COMBUSTION CHAMBER BUMPER ASS. |
| 21 | 019402 | 1 | UPPER PROBE ASSEMBLY |
| 22 | 019295 | 1 | KNOB |
| 23 | 019735 | 1 | PROBE AXIS |
| 24 | 019278 | 1 | PROBE |
| 25 | 019275 | 1 | CARTER |
| 26 | 013812 | 1 | ELECTROVALVE HEAT PROTECTION |
| 27 | 013787 | 1 | NOSE PROTECTION |
| 28 | 013813 | 4 | SCREW CHC M5-16 |
| 29 | 019121 | 1 | CAP |
| 30 | 013797 | 4 | SCREW CHC M5-35 |
| 31 | 019077 | 1 | MOTOR ASSEMBLY |
| 32 | 014771 | 1 | FAN MOTOR GROUND WIRE |
| 33 | 321610 | 1 | RETAINING RING |
| 34 | 334310 | 1 | MOTOR MOUNT |
| 35 | 404702 | 1 | SCREW THREAD FORMING 6X3/8 |
| 36 | 013808 | 1 | WIRES GUIDE |
| 37 | 013731 | 1 | SPARK PLUG ASSEMBLY |
| 38 | 321590 | 1 | MOTOR SLEEVE |
| 39 | 013740 | 1 | CYLINDER HEAD |
| 40 | 321650 | 1 | CYLINDER O'RING |
| 41 | 321660 | 1 | FAN BLADE ASSEMBLY |
| 42 | 013750 | 1 | SEAL |
| 43 | 900456 | 4 | SCREW SWAGE FORM 4-15 |
| 44 | 019288 | 1 | COMBUSTION CHAMBER ASSEMBLY |
| 45 | 013781 | 2 | COMBUSTION CHAMBER STOP PIN |
| 46 | 019073 | 1 | COMBUSTION CHAMBER LOCK OUT |
| 47 | 013805 | 2 | SCREW TAP TYPE 4X8 |
| 48 | 015000 | 2 | CARTER LABEL |
| 49 | 019291 | 1 | MAGAZINE ASSEMBLY (LEFT & RIGHT) |
| 50 | 013741 | 1 | SHEAR BLOCK |
| 51 | 013763 | 1 | NAIL CHANNEL |
| 52 | 019280 | 1 | COVER PLATE MAGAZINE |
| 53 | 019387 | 2 | NAME TOOL LABEL |
| 54 | 013767 | 1 | MAGAZINE SPRING |
| 55 | 019279 | 1 | FOLLOWER ASSEMBLY |
| 56 | 013762 | 1 | FOLLOWER SUB ASSEMBLY |
| 57 | 014999 | 1 | LEVELS LABEL |
| 58 | 019297 | 1 | HANDLES ASSEMBLY (LEFT & RIGHT) |
| 59 | 019386 | 1 | NAME PLATE LABEL |
| 60 | 013799 | 4 | SCREW ECO-SYN TORX 4X25 |
| 61 | 019089 | 1 | POWER BUTTON |
| 62 | 019091 | 1 | DEL ASSEMBLY |
| 63 | 019273 | 1 | BATTERY TERMINAL ASSEMBLY |
| 64 | 019286 | 1 | WIRES ASSEMBLY |
| 65 | 019119 | 1 | TRIGGER |
| 66 | 013783 | 1 | TRIGGER SPRING |
| 67 | 019084 | 1 | COMBUSTION CHAMBER LOCK BAR |
| 68 | 019096 | 1 | RED S-MEFI |
| 68-1 | 019097 | 1 | BLACK S-MEFI |
| 69 | 013734 | 1 | CONTACT LEVEL |
| 70 | 013785 | 1 | CONTACTOR PLATE |
| 71 | 013798 | 9 | SCREW ECO-SYN TORX 4X12 |
| 72 | 019290 | 1 | HOOK SPRING ASSEMBLY |
| 73 | 019284 | 1 | HOOK |
| 74 | 019293 | 1 | LOCK MAGAZINE SYSTEM |
| 75 | 019285 | 1 | SPRING LOCK MAGAZINE SYSTEM |
| 76 | 013739 | 1 | ELECTROVALVE PLUG CONNECTION |
| 77 | 019116 | 1 | RED ELECTROVALVE ASSEMBLY |
| 77-1 | 019117 | 1 | BLACK ELECTROVALVE ASSEMBLY |
| 78 | 019088 | 1 | EJECT BUTTON ASSEMBLY |
| 79 | 019282 | 1 | ANTENNA |
| 80 | 019281 | 1 | HANDLE COVER |

| TORQUE VALUES | |
|---------------|-----|
| MIN | N.m |
| MAX | |