



360Xi

FRAMING NAILER



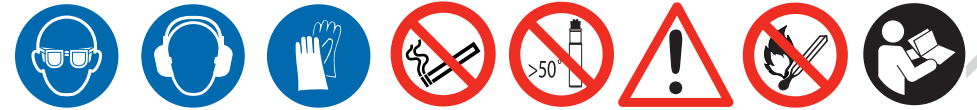
www.paslode.co.uk



NEVER STOP BUILDING

360Xi

FRAMING NAILER



PLEASE ADHERE TO SAFETY RECOMMENDATIONS & WARNINGS AT ALL TIMES

CONGRATULATIONS

Thank you for choosing a Paslode tool. The 360Xi framing nailer is compact, well-balanced, capable of firing both RounDrive® nails and NailScrews. It has an intelligent fuel injection system which delivers all weather functioning performance.

THE TOOL



TECHNICAL DATA

Product weight	3.6 kg
Size / depth	376mm / 121mm
Power	105 J
Fastener length range	50 -90mm
Maximum Cycle rate per hour (fixings)	1000 fixings
Maximum Cycle rate per sec (fixings)	2-3 fixings
Magazine capacity	47 fixings
Fuel cell capacity	1100 (-5°C) shots
Fixings per battery charge	13 000 shots
Battery charge time	90 Min.
Battery type	Lithium
Operating temperature range	-15°C...+49°C
Peak Sound Pressure (EN 12549) LpCpeak	135 dB(C)
Workplace Relevant Emission, LpA	95 dB(A)
Vibration (EN ISO 8662-11) ahv	3,9 m/s ²

IN YOUR KIT

- 360Xi Framing Nailer
- Lithium Battery
- Lithium Battery Charger
- Safety eye protection to EN166-F standard.
- Allen Key
- Instruction Manual
- Tool Schematics
- Safety Instructions
- CE & UKCA Declaration of Conformity

CONSUMABLES YOU NEED

RounDrive® 34° Nails
 Ø = 2.5 > 3.1 mm
 L = 50 > 90 mm
 Smooth & Ring



IF YOU NEED EXTRA ACCESSORIES



Series-i Fuel Cell 300348
 Li-ion Battery 018880
 Impulse Cleaning Kit 013690
 Battery Charger 018882

INDEX:

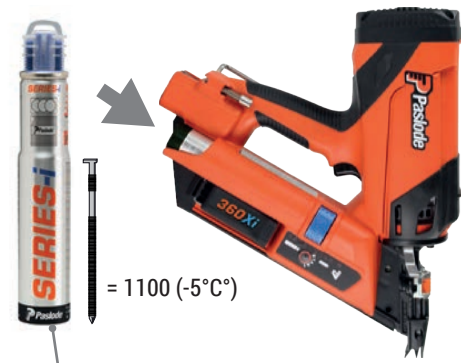
- Getting Started Pg 4-5
- Tool Lights Pg 5
- Tool Adjustment Pg 6-7
- Tool Maintenance Pg 8-9
- Trouble Shooting Pg 10
- Paslode Range Pg 11



Refer to www.paslode.co.uk for further information on your tool and FAQ.

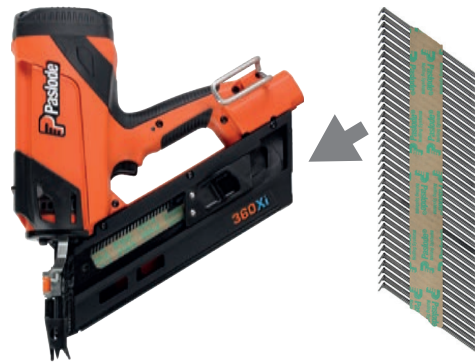
GETTING STARTED

FUEL CELL



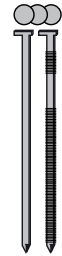
Check fuel is in date (see base of fuel)

CONSUMABLES



360Xi

RoundDrive® 34° Nails
 Ø = 2.5 > 3.1 mm
 L = 50 > 90 mm
 (Smooth & Ring)



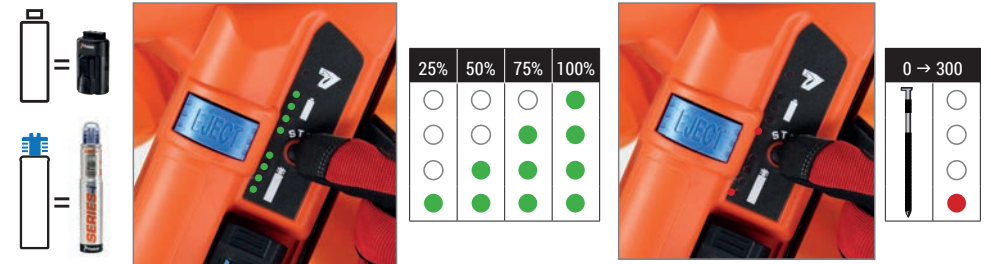
GETTING STARTED

BATTERY



	15 min.	2 500 max.
	60 min.	10 000 max.
	90 min.	13 000 max.

LED LIGHTS



RESTING POSITION

If you need to rest or place the tool down, please place in the following position:



TOOL ADJUSTMENTS

-15°C	1 000 /hour
≤ T ≤	
+49°C	4 000 /day



ROTATING BELT HOOK



DEPTH OF DRIVE



ACTUATING THE TOOL



TOOL MAINTENANCE: FILTER

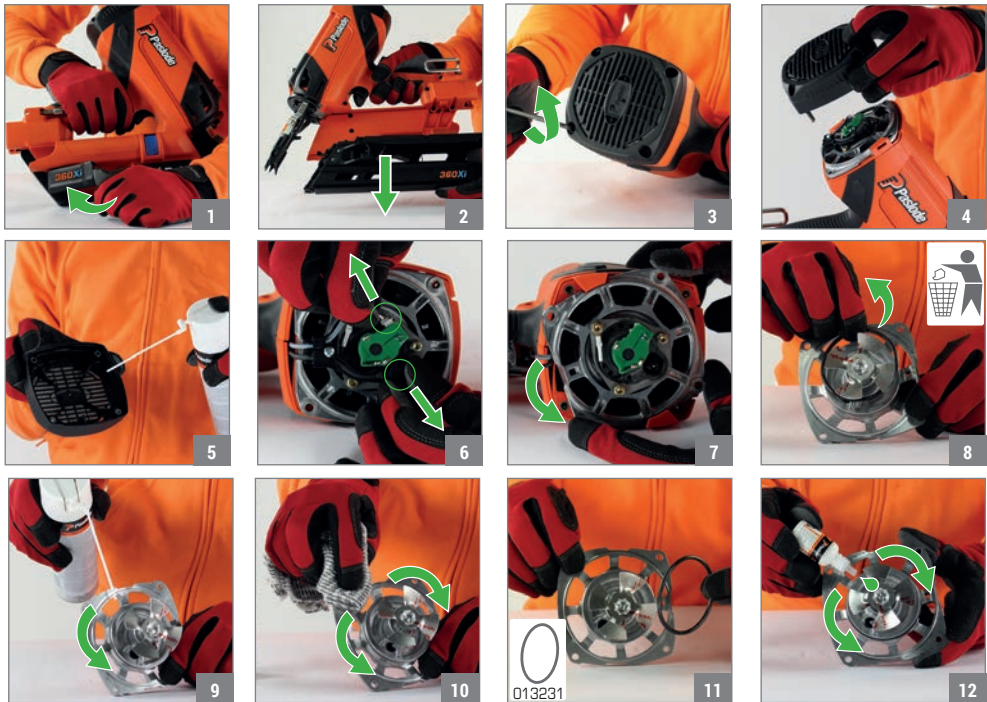
CLEANING KIT 013690



TOOL MAINTENANCE: FAN

PLEASE USE:

- CLEANING KIT 013690 AND THE O RING 013231



TOOL MAINTENANCE: FAN continued.....



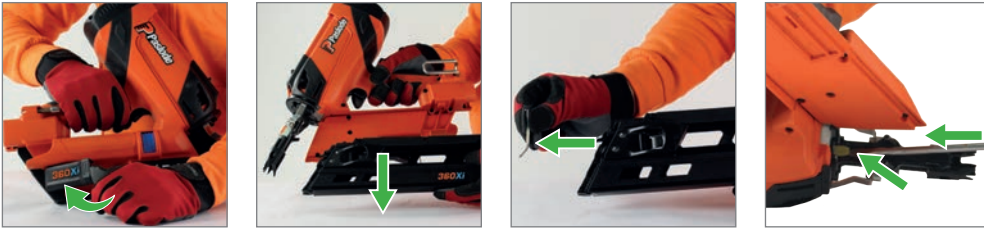
MAINTENANCE LIGHT RESET

The tool will flash green/red once the tool has fired 50 000 shots. This maintenance light can be reset by holding the start button for 10 seconds. Only reset once maintenance has been carried out on the tool.

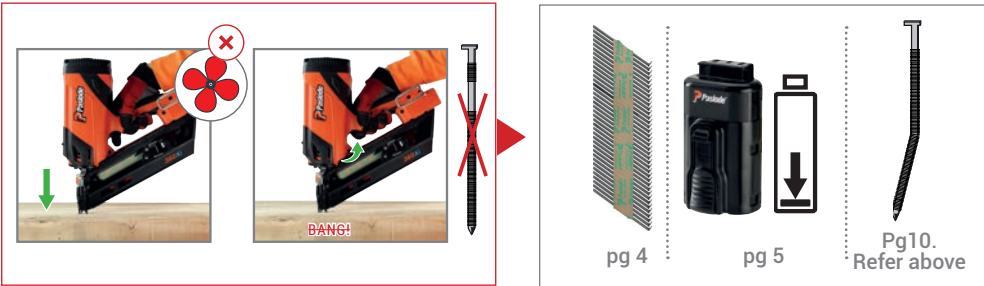


TROUBLE SHOOTING

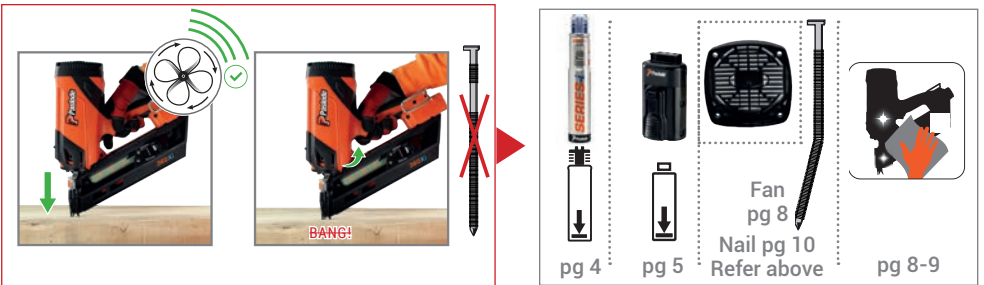
ISSUE: HOW TO CLEAR A NAIL JAM



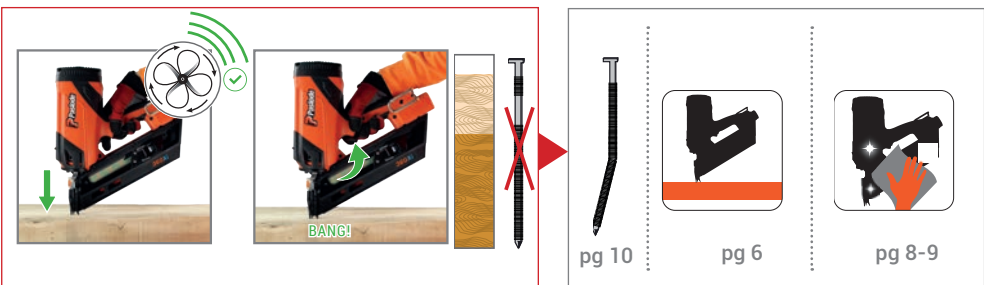
ISSUE: TRIGGER WORKS HOWEVER FAN NOT WORKING AND NO NAIL COMES OUT



ISSUE: TRIGGER & FAN WORKING HOWEVER NO NAIL COMES OUT



ISSUE: FAN WORKS AND EXPLOSION HAPPENS HOWEVER NO NAIL OUT



PASLODE RANGE

FRAMING

Paslode Framing systems have been the cornerstone of first fix carpentry across the globe for over 30 years, minimising user fatigue and downtime on site.

360XI



IM350+



FINISHING

Paslode finish nailing systems offer the lightest and most compact range of reliable tools on the market. With precision in tight spaces ensures each brad is consistently driven flush which guarantees a high-quality finish

IM65



IM65A



IM50



SPECIALIST

Paslode Specialist systems offers a lightweight, versatile alternative to hand nailing. They have the power to deliver a secure fixing whilst reducing installation time and labour on site.

PPNXi



IM45 GN



WARRANTY



Paslode tools have a standard 2 year warranty, covering all components providing that Manufacturer's Operating Instructions have been followed, that no modifications have been made or non-original components or spare parts have been used, and that the tool has not been accidentally damaged or neglected.



019690-1
11/2020



Route de Lyon F-26500
Bourg-lès-Valence

ITWCP UK Glenrothes
Fife UK KY6 2SW

Paslode®
Impulse®

SPIT PULSA

STOCKade®

GENERAL SAFETY INSTRUCTIONS



014749 - 01/21

UK P2

IE P5



GENERAL SAFETY INSTRUCTIONS FOR THE USE OF INTERNAL COMBUSTION, GAS-OPERATED FASTENER TOOLS.

TOOL, FUEL CELL, BATTERY AND BATTERY CHARGER

- Original instructions -

Warning: Please read the instructions and warnings for this tool carefully before use. Failure to do so could lead to serious injury.

The regulation 2008 No. 1957 and the ISO International Standard EN ISO 11148-13:2018 lay down certain safety requirements for hand-held non- electric power fastener driving tools, and in your own interest we recommend you follow these safety requirements without exception.

IMPULSE and PULSA SYSTEM



Read and understand tool labels and manual. Failure to follow warnings could result in serious injury.



Operators and others in work area shall wear impact-resistant eye protection with side shields.



Operators and others in work area shall wear hearing protection.

The Impulse and Pulsa system consists of: tool, fuel cell, battery, charger and fasteners. In the interests of operator and system safety, the tool, fasteners and the fuel cells referred to in the PASLODE/SPIT/STOCKADE documents, must be considered as one single, complete system.



Statement of use:

Impulse and Pulsa fasteners driving tools must be used like described in the operating manual.

General Safety Rules:

To drive fasteners into hard surfaces like steel & concrete use the appropriated tools. Please refer to the UKCA declaration of the tools. For these tools the angle between the tool and the surface must not be superior to 15°.

Multiple hazards:

Read and understand the safety instructions before connecting, disconnecting, loading, operating, maintaining, changing accessories on, or working near the tool. Failure to do so can result in serious bodily injury.

Pulsa fasteners driving tools must be used only to drive fasteners in wood, concrete and steel. **Impulse fasteners driving tools** must be used only to drive fasteners in wood. When not in use, remove the battery and the fasteners and return the tool to its carrying case. Do not load fasteners with the trigger and or work-contacting element pressed. Always assume the tool is loaded.

Check prior to each operation that the safety mechanism is functioning properly.

Never put your hand on the front of the tool. The tool must be operated only when it is in contact with the material to be fixed.

Ensure that you use the correct length of fastener with the depth adjuster correctly set, so that nails do not protrude when a fixing is made.

Do not drive fasteners into knots or on top of other fasteners.

Never drive fasteners into areas with concealed hazards. The temperature of the tool may increase depending on the firing frequency. Observe the maximum cycle rates given in the operating instructions.

We recommend that you carry out regular maintenance (cleaning and lubrication) to keep the tool in good working order.

Keep fingers away from trigger when not operating this tool and when moving from one operating position to another.

Keep all body parts such as hands and legs etc away from firing direction and ensure fastener cannot penetrate workpiece into parts of the body.

When using the tool, be aware that the fastener could deflect and cause injury.

Hold the tool with a firm grasp and be prepared to manage recoil.

Only technically skilled operators should use the Paslode Impulse or SPIT Pulsa nailing system. They must know how the tool works and must follow the manufacturer's operating and safety instructions.

ITW reserve the right to revise specifications without notice. Tools without warning labels should not be used. Warning labels are available from ITW (see enclosed spare parts list for reverence).

It is not permitted to make any modification to the tool, fuel cell or battery, other than those specified by the manufacturer. Modifications may reduce the effectiveness of safety measures and increase the risks to the operator and/or bystander.

An additional downforce is required to operate tools which are used on hard surfaces, such as steel and concrete, to prevent slipping.

Do not discard the safety instructions.

Do not use a tool if the tool has been damaged.

Be careful when handling fasteners, especially when loading and unloading, as the fasteners have sharp points which could cause injury.

Always check the tool before use for broken, misconnected or worn parts.

Do not overreach. Only use in a safe working place. Keep proper footing and balance at all times.

Keep bystanders away (when working in an area where there is a likelihood of through traffic of people). Clearly mark off your operating area.

Never point the tool at yourself or others.
If the operator has to move locations, the tool must be carried pointed downwards.
Please keep the nailer, fuel cell, battery and charger out of the reach of children.

Projectile hazards:

The fastener driving tool shall be disconnected (disconnect energy supply) when unloading fasteners, making adjustments, clearing jams or changing accessories or examination of the tool if misfires.
During operation be careful that fasteners penetrate material correctly and cannot be deflected / misfired / broken out towards operator and /or any bystanders.
Don't shoot nail on nail.
During operation, debris from workpiece and fastening / collation system may be discharged.
When using the tool, the operator and any bystanders must wear appropriate eye protection (impact-resistant eye protection with side shields).
The risks to others shall be assessed by the operator.
Ensure tool is always safely engaged on the workpiece and can not slip.

Operating hazards:

Hold the tool correctly: be ready to counteract normal or sudden movements such as recoil.
Maintain a balanced body position and secure footing.
Only the main energy listed in the operating instructions may be used.
Appropriate safety glasses shall be used and appropriate protective clothing and gloves are recommended.
Appropriate hearing protection shall be worn.
Only wear gloves that provide adequate feel and safe control of triggers and any adjusting devices.

Repetitive motions hazards:

If the operator experiences symptoms such as persistent or recurring discomfort, pain, throbbing, aching, tingling, numbness, burning sensation, or stiffness, do not ignore these warning signs. The operator should consult a qualified health professional regarding overall activities.

Accessory and consumable hazards:

Only use PASLODE/SPIT/STOCKADE specified consumables or compatibles. In accordance with ISO 11148-13:2018, PASLODE/SPIT/STOCKADE has specified, in its operating instructions, PASLODE/ SPIT/STOCKADE consumables as safe to use. In case of use of non-specified consumables, ensure that they are compatible, safe and lawful on sale in Great Britain. Only consumables and accessories listed in the operating instructions may be used in the driving tools.
Only use the sizes and types of accessories that are provided by the manufacturer.
Only use the lubricants listed in the operating instructions may be used.
Disconnect the energy supply to the tool, such as air or gas or battery as applicable, before changing / replacing accessories such as workpiece contact, or making any adjustments.

Workplace hazards:

Slips, trips and falls are major causes of workplace injury. Be aware of slippery surfaces caused by use of the tool. Proceed with additional care in unfamiliar surroundings. Hidden hazards may exist, such as electricity or other utility lines.
Do not use the tool in potentially explosive atmospheres the tool is not insulated from coming into contact with electric power.

Make sure there are no electrical cables, gas pipes etc... that could cause a hazard if damaged by use of the tool.

Noise hazards:

Unprotected exposure to high noise levels can cause permanent, disabling, hearing loss and other problems such as tinnitus (ringing, buzzing, whistling or humming in the ears).
Appropriate controls to reduce the risk may include actions such as damping materials to prevent workpieces from "ringing".
Use appropriate hearing protection.
Operate and maintain the tool as recommended in these instructions, to prevent an unnecessary increase in noise levels.
If the tool has a silencer, always ensure it is in place and in good working order when the tool is being operated.
The values reported in the UKCA Declaration are tool-related characteristic values and do not represent the noise generation at the point of use. Noise at the point of use will for example depend on the working environment, the workpiece, the workpiece support, and the number of driving operations.

Vibration hazards:

Exposure to vibration can cause disabling damage to the nerves and blood supply of the hands and arms.
Wear warm clothing when working in cold conditions, keep your hands warm and dry.
If you experience numbness, tingling, pain or whitening of the skin in your fingers or hands, seek medical advice from a qualified occupational health professional regarding overall activities.
Operate and maintain the tool as recommended in these instructions, to prevent an unnecessary increase in vibration levels.
Hold the tool with a light, but safe, grip because the risk from vibration is generally greater when the grip force is higher.
The vibration emission value reported in the UKCA Declaration is a tool-related characteristic value and does not represent the influence to the hand-arm-system when using the tool. Any influence to the hand-arm-system when using the tool will for example depend on the gripping force, the contact pressure force, the working direction, the adjustment of energy supply, the workpiece, the workpiece support.

Additional safety instructions for gas tools:

Gas tools shall only be used with gas containers which are listed in the operating instructions of the tool, or which have been tested according to EN ISO 11148-13:2018 by the gas container supplier.
Be careful when using gas tools, as the tool can become hot, affecting grip and control.
Gas fastener driving tools shall be used in ventilated spaces. Exhaust gases in a confined space can be hazardous. Do not use the tool outside in the rain or where excessive moisture is present.
In the case that liquid combustible gas comes into contact with human skin, injuries may occur.
Gas containers shall be marked according to the required transport regulation.
Keep the tool from heat sources as the fuel cell could be damaged.
Do not smoke when handling the fuel cell.
Keep the metering valve away from your face and eyes.
Do not inhale its contents.
Handle gas containers carefully and check for damages.
Damaged gas containers can explode and cause injury.

Read and follow the instructions supplied with the gas container.

Ensure combustible materials are not exposed to hot exhaust gases.

Do not use gas tools in explosive areas as the sparks generated in the tool may cause fire or explosion.

For gas tools, a small release of gas might be generated by regular operations.

Maintenance instructions:

It is important to visually inspect the tool each time before use:

- The smooth movement of the work contact element
- If the tool is complete and no parts missing

For the maintenance of fastener driving tools, only spare parts specified by the manufacturer or his authorised representative shall be used.

Repairs shall be carried out only by agent authorized by the manufacturer or by other specialists, having due regard to the information given in the operating instructions.

Operators should be capable of conducting basic maintenance on the tool.

Tools must be recycled or taken to a designated disposal areas.

FUEL CELL



The fuel cell is an aerosol product corresponding to the 2013/10/EU regulations. It contains:

- Liquefied hydrocarbon gases (butane, propane, propylene)
- A lubricant to maximize the tool durability.

When the fuel is used there will always be some propellant left inside the cartridge. The fuel cell is always pressurized.

Its contents are extremely flammable. The fuel cell is not reusable. Do not attempt to refill.

Do not spray towards a flame or an incandescent body. Keep away from any heat sources and from electrostatic charges.

Do not smoke when handling or loading fuel cells.

Do not expose to temperatures exceeding 50°C. Warning: liquid gas can cause injury in the event of contact with the skin or eyes.

Store and use the cartridge in a well-ventilated area only. Do not inhale.

Do not pierce or burn the cartridge after use.

Keep away from children.

Dispose of only in designated places.

For optimum performance, use before the date indicated at the bottom of the cartridge.

TRANSPORT

Transport of small amounts (<30 Kg) in a private vehicle is permitted without a transport and safety sheet (Limited quantity exemption for road transport). The regulations by transport categories are:

- Road/rail: ADR - RID - UN code 1950 class 2 code 5F
- Sea: IMDG - UN code 1950 + emergency instructions sheet F-D, S-U
- Air : IATA - UN code 1950 class 2.1

Goods must be accompanied by the written safety instruction of the chapter 5-4-3 of the ADR.

Transport by post is not permitted

STORAGE

Stores and showrooms must comply with building

regulations. All local instructions corresponding to fire regulations must be followed.

Where possible, store fuel at a stable temperature in the range: 5 to 25°C. Do not expose to temperatures exceeding 50°C. Do not use tools that emit flames, sparks or reach high temperatures in the vicinity that fuel cells are stored.

Do not store in designated thoroughfares, hallways or starwells.

Store in a well-ventilated area. Fuel cells must not be displayed in shop windows.

Storage with pyrotechnic products is not permitted.

FIRST AID

Direct contact with liquid gas may cause burns or frostbite.

In case of inhalation remove the person to fresh air, and encourage breathing. Should the casualty become unconscious, or breathing does not quickly return to normal, summon urgent medical assistance.

If gas gets into the eyes they should be flushed out with copious amounts of water. Skin contamination should be removed with soapy water.

If symptoms persist, seek medical assistance.

BATTERY AND BATTERY CHARGER



The adapter, charger and battery are designed to operate together as one system. Only use the 'Paslode Impulse' charger for 'Paslode Impulse' batteries, only use the 'Spit Pulsa' charger for 'Spit Pulsa' batteries.

The charging system is designed for use in covered areas. Do not expose it to rain or to excessive humidity.

Arrange the charger lead appropriately to avoid unnecessary damage to it. Do not use the system if the cable or plug is damaged. Replace immediately.

To avoid electrocution, disconnect the power supply adapter before cleaning the terminals and contacts. Use a dry cloth. Do not short-circuit a battery.

Do not put a battery on charge if its temperature is less than 5°C or greater than 40°C. Do not use a battery charger which heats up excessively or gives off fumes when connected-disconnect the charger immediately.

Do not pierce or open the battery's cells.

Do not store batteries at a temperature above 50°C. Do not incinerate spent batteries.

Only charge one battery at a time.

Batteries and charging systems must be recycled or taken to a designated disposal areas.

Keep away from children.

TRANSPORT

The contained lithium-ion batteries are subject to the Dangerous Goods Legislation requirements (see UN3480 or UN3481). The user can transport the batteries by road without further requirements.

When being transported by third parties (e.g.: air transport or forwarding agency), special requirements on packaging and labelling must be observed. For preparation of the item being shipped, consulting an expert for hazardous material is required.

Dispatch batteries only when the housing is undamaged. Tape or mask off open contacts and pack up the battery in such a manner that it cannot move around in the packaging. Please also observe possibly more detailed national regulations.



GENERAL SAFETY INSTRUCTIONS FOR THE USE OF INTERNAL COMBUSTION, GAS-OPERATED FASTENER TOOLS.

TOOL, FUEL CELL, BATTERY AND BATTERY CHARGER

- Original instructions -

Warning: Please read the instructions and warnings for this tool carefully before use. Failure to do so could lead to serious injury.

The Directive 2006/42/EC and the ISO International Standard EN ISO 11148-13:2018 lay down certain safety requirements for hand-held non- electric power fastener driving tools, and in your own interest we recommend you follow these safety requirements without exception.

IMPULSE and PULSA SYSTEM



Read and understand tool labels and manual. Failure to follow warnings could result in serious injury.



Operators and others in work area shall wear impact-resistant eye protection with side shields.



Operators and others in work area shall wear hearing protection.

The Impulse and Pulsa system consists of: tool, fuel cell, battery, charger and fasteners. In the interests of operator and system safety, the tool, fasteners and the fuel cells referred to in the PASLODE/SPIT/STOCKADE documents, must be considered as one single, complete system.



Statement of use:

Impulse and Pulsa fasteners driving tools must be used like described in the operating manual.

General Safety Rules:

To drive fasteners into hard surfaces like steel & concrete use the appropriated tools. Please refer to the EC declaration of the tools. For these tools the angle between the tool and the surface must not be superior to 15°.

Multiple hazards:

Read and understand the safety instructions before connecting, disconnecting, loading, operating, maintaining, changing accessories on, or working near the tool. Failure to do so can result in serious bodily injury.

Pulsa fasteners driving tools must be used only to drive fasteners in wood, concrete and steel. **Impulse fasteners driving tools** must be used only to drive fasteners in wood. When not in use, remove the battery and the fasteners and return the tool to its carrying case. Do not load fasteners with the trigger and or work-contacting element pressed. Always assume the tool is loaded.

Check prior to each operation that the safety mechanism is functioning properly.

Never put your hand on the front of the tool. The tool must be operated only when it is in contact with the material to be fixed.

Ensure that you use the correct length of fastener with the depth adjuster correctly set, so that nails do not protrude when a fixing is made.

Do not drive fasteners into knots or on top of other fasteners.

Never drive fasteners into areas with concealed hazards. The temperature of the tool may increase depending on the firing frequency. Observe the maximum cycle rates given in the operating instructions.

We recommend that you carry out regular maintenance (cleaning and lubrication) to keep the tool in good working order.

Keep fingers away from trigger when not operating this tool and when moving from one operating position to another.

Keep all body parts such as hands and legs etc away from firing direction and ensure fastener cannot penetrate workpiece into parts of the body.

When using the tool, be aware that the fastener could deflect and cause injury.

Hold the tool with a firm grasp and be prepared to manage recoil.

Only technically skilled operators should use the Paslode Impulse or SPIT Pulsa nailing system. They must know how the tool works and must follow the manufacturer's operating and safety instructions.

ITW reserve the right to revise specifications without notice. Tools without warning labels should not be used. Warning labels are available from ITW (see enclosed spare parts list for reverence).

It is not permitted to make any modification to the tool, fuel cell or battery, other than those specified by the manufacturer. Modifications may reduce the effectiveness of safety measures and increase the risks to the operator and/or bystander.

An additional downforce is required to operate tools which are used on hard surfaces, such as steel and concrete, to prevent slipping.

Do not discard the safety instructions.

Do not use a tool if the tool has been damaged.

Be careful when handling fasteners, especially when loading and unloading, as the fasteners have sharp points which could cause injury.

Always check the tool before use for broken, misconnected or worn parts.

Do not overreach. Only use in a safe working place. Keep proper footing and balance at all times.

Keep bystanders away (when working in an area where there is a likelihood of through traffic of people). Clearly mark off your operating area.

Never point the tool at yourself or others.
If the operator has to move locations, the tool must be carried pointed downwards.
Please keep the nailer, fuel cell, battery and charger out of the reach of children.

Projectile hazards:

The fastener driving tool shall be disconnected (disconnect energy supply) when unloading fasteners, making adjustments, clearing jams or changing accessories or examination of the tool if misfires.
During operation be careful that fasteners penetrate material correctly and cannot be deflected / misfired / broken out towards operator and /or any bystanders.
Don't shoot nail on nail.
During operation, debris from workpiece and fastening / collation system may be discharged.
When using the tool, the operator and any bystanders must wear appropriate eye protection (impact-resistant eye protection with side shields).
The risks to others shall be assessed by the operator.
Ensure tool is always safely engaged on the workpiece and can not slip.

Operating hazards:

Hold the tool correctly: be ready to counteract normal or sudden movements such as recoil.
Maintain a balanced body position and secure footing.
Only the main energy listed in the operating instructions may be used.
Appropriate safety glasses shall be used and appropriate protective clothing and gloves are recommended.
Appropriate hearing protection shall be worn.
Only wear gloves that provide adequate feel and safe control of triggers and any adjusting devices.

Repetitive motions hazards:

If the operator experiences symptoms such as persistent or recurring discomfort, pain, throbbing, aching, tingling, numbness, burning sensation, or stiffness, do not ignore these warning signs. The operator should consult a qualified health professional regarding overall activities.

Accessory and consumable hazards:

Only use PASLODE/SPIT/STOCKADE specified consumables or compatibles. In accordance with ISO 11148-13:2018, PASLODE/SPIT/STOCKADE has specified, in its operating instructions, PASLODE/ SPIT/STOCKADE consumables as safe to use. In case of use of non-specified consumables, ensure that they are compatible, safe and lawfully on sale in European Union. Only consumables and accessories listed in the operating instructions may be used in the driving tools.
Only use the sizes and types of accessories that are provided by the manufacturer.
Only use the lubricants listed in the operating instructions may be used.
Disconnect the energy supply to the tool, such as air or gas or battery as applicable, before changing / replacing accessories such as workpiece contact, or making any adjustments.

Workplace hazards:

Slips, trips and falls are major causes of workplace injury. Be aware of slippery surfaces caused by use of the tool. Proceed with additional care in unfamiliar surroundings. Hidden hazards may exist, such as electricity or other utility lines.
Do not use the tool in potentially explosive atmospheres the tool is not insulated from coming into contact with electric power.

Make sure there are no electrical cables, gas pipes etc... that could cause a hazard if damaged by use of the tool.

Noise hazards:

Unprotected exposure to high noise levels can cause permanent, disabling, hearing loss and other problems such as tinnitus (ringing, buzzing, whistling or humming in the ears).
Appropriate controls to reduce the risk may include actions such as damping materials to prevent workpieces from "ringing".
Use appropriate hearing protection.
Operate and maintain the tool as recommended in these instructions, to prevent an unnecessary increase in noise levels.
If the tool has a silencer, always ensure it is in place and in good working order when the tool is being operated.
The values reported in the EC Declaration are tool-related characteristic values and do not represent the noise generation at the point of use. Noise at the point of use will for example depend on the working environment, the workpiece, the workpiece support, and the number of driving operations.

Vibration hazards:

Exposure to vibration can cause disabling damage to the nerves and blood supply of the hands and arms.
Wear warm clothing when working in cold conditions, keep your hands warm and dry.
If you experience numbness, tingling, pain or whitening of the skin in your fingers or hands, seek medical advice from a qualified occupational health professional regarding overall activities.
Operate and maintain the tool as recommended in these instructions, to prevent an unnecessary increase in vibration levels.
Hold the tool with a light, but safe, grip because the risk from vibration is generally greater when the grip force is higher.
The vibration emission value reported in the EC Declaration is a tool-related characteristic value and does not represent the influence to the hand-arm-system when using the tool. Any influence to the hand-arm-system when using the tool will for example depend on the gripping force, the contact pressure force, the working direction, the adjustment of energy supply, the workpiece, the workpiece support.

Additional safety instructions for gas tools:

Gas tools shall only be used with gas containers which are listed in the operating instructions of the tool, or which have been tested according to EN ISO 11148-13:2018 by the gas container supplier.
Be careful when using gas tools, as the tool can become hot, affecting grip and control.
Gas fastener driving tools shall be used in ventilated spaces. Exhaust gases in a confined space can be hazardous. Do not use the tool outside in the rain or where excessive moisture is present.
In the case that liquid combustible gas comes into contact with human skin, injuries may occur.
Gas containers shall be marked according to the required transport regulation.
Keep the tool from heat sources as the fuel cell could be damaged.
Do not smoke when handling the fuel cell.
Keep the metering valve away from your face and eyes.
Do not inhale its contents.
Handle gas containers carefully and check for damages.
Damaged gas containers can explode and cause injury.

Read and follow the instructions supplied with the gas container.

Ensure combustible materials are not exposed to hot exhaust gases.

Do not use gas tools in explosive areas as the sparks generated in the tool may cause fire or explosion.

For gas tools, a small release of gas might be generated by regular operations.

Maintenance instructions:

It is important to visually inspect the tool each time before use:

- The smooth movement of the work contact element
- If the tool is complete and no parts missing

For the maintenance of fastener driving tools, only spare parts specified by the manufacturer or his authorised representative shall be used.

Repairs shall be carried out only by agent authorized by the manufacturer or by other specialists, having due regard to the information given in the operating instructions.

Operators should be capable of conducting basic maintenance on the tool.

Tools must be recycled or taken to a designated disposal areas.

FUEL CELL



The fuel cell is an aerosol product corresponding to the 2013/10/EU regulations. It contains:

- Liquefied hydrocarbon gases (butane, propane, propylene)
- A lubricant to maximize the tool durability.

When the fuel is used there will always be some propellant left inside the cartridge. The fuel cell is always pressurized.

Its contents are extremely flammable. The fuel cell is not reusable. Do not attempt to refill.

Do not spray towards a flame or an incandescent body. Keep away from any heat sources and from electrostatic charges.

Do not smoke when handling or loading fuel cells.

Do not expose to temperatures exceeding 50°C. Warning: liquid gas can cause injury in the event of contact with the skin or eyes.

Store and use the cartridge in a well-ventilated area only. Do not inhale.

Do not pierce or burn the cartridge after use.

Keep away from children.

Dispose of only in designated places.

For optimum performance, use before the date indicated at the bottom of the cartridge.

TRANSPORT

Transport of small amounts (<30 Kg) in a private vehicle is permitted without a transport and safety sheet (Limited quantity exemption for road transport). The regulations by transport categories are:

- Road/rail: ADR - RID - UN code 1950 class 2 code 5F
- Sea: IMDG - UN code 1950 + emergency instructions sheet F-D, S-U
- Air : IATA - UN code 1950 class 2.1

Goods must be accompanied by the written safety instruction of the chapter 5-4-3 of the ADR.

Transport by post is not permitted

STORAGE

Stores and showrooms must comply with building

regulations. All local instructions corresponding to fire regulations must be followed.

Where possible, store fuel at a stable temperature in the range: 5 to 25°C. Do not expose to temperatures exceeding 50°C. Do not use tools that emit flames, sparks or reach high temperatures in the vicinity that fuel cells are stored.

Do not store in designated thoroughfares, hallways or starwells.

Store in a well-ventilated area. Fuel cells must not be displayed in shop windows.

Storage with pyrotechnic products is not permitted.

FIRST AID

Direct contact with liquid gas may cause burns or frostbite.

In case of inhalation remove the person to fresh air, and encourage breathing. Should the casualty become unconscious, or breathing does not quickly return to normal, summon urgent medical assistance.

If gas gets into the eyes they should be flushed out with copious amounts of water. Skin contamination should be removed with soapy water.

If symptoms persist, seek medical assistance.

BATTERY AND BATTERY CHARGER



The adapter, charger and battery are designed to operate together as one system. Only use the 'Paslode Impulse' charger for 'Paslode Impulse' batteries, only use the 'Spit Pulsa' charger for 'Spit Pulsa' batteries.

The charging system is designed for use in covered areas. Do not expose it to rain or to excessive humidity.

Arrange the charger lead appropriately to avoid unnecessary damage to it. Do not use the system if the cable or plug is damaged. Replace immediately.

To avoid electrocution, disconnect the power supply adapter before cleaning the terminals and contacts. Use a dry cloth. Do not short-circuit a battery.

Do not put a battery on charge if its temperature is less than 5°C or greater than 40°C. Do not use a battery charger which heats up excessively or gives off fumes when connected-disconnect the charger immediately.

Do not pierce or open the battery's cells.

Do not store batteries at a temperature above 50°C. Do not incinerate spent batteries.

Only charge one battery at a time.

Batteries and charging systems must be recycled or taken to a designated disposal areas.

Keep away from children.

TRANSPORT

The contained lithium-ion batteries are subject to the Dangerous Goods Legislation requirements (see UN3480 or UN3481). The user can transport the batteries by road without further requirements.

When being transported by third parties (e.g.: air transport or forwarding agency), special requirements on packaging and labelling must be observed. For preparation of the item being shipped, consulting an expert for hazardous material is required.

Dispatch batteries only when the housing is undamaged. Tape or mask off open contacts and pack up the battery in such a manner that it cannot move around in the packaging. Please also observe possibly more detailed national regulations.